

## RENEGADE WARRANTY

RENEGADE MY2024 MOTORHOMES ARE COVERED BY A 1-YEAR UNLIMITED MILES LIMITED WARRANTY, PLUS A 3-YEAR 36,000-MILE LIMITED STRUCTURAL WARRANTY.

ALL RENEGADE MOTORHOME CHASSIS, ENGINES, TRANSMISSIONS, AND DRIVETRAIN WARRANTIES ARE PROVIDED AND ADMINISTERED BY THEIR RESPECTIVE MANUFACTURERS.

FOR SPECIFIC INFORMATION ABOUT THESE WARRANTIES, ASK YOUR DEALER OR CONTACT RENEGADE RV.



# VALENCIA 2024



Renegade  
RV

Renegade  
RV

52216 SR15 BRISTOL, IN 46507  
574.848.1126 | RENEGADERV.COM

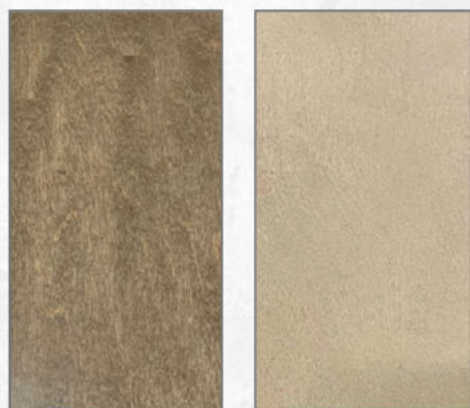
# VALENCIA

THE VALENCIA COMBINES FAMILY-FRIENDLY FEATURES WITH STYLISH DETAILS THAT MAKE LIVING AND TRAVELING A PLEASURE. THE VALENCIA'S FUNCTIONAL DESIGN CREATES A SPACIOUS AND INVITING INTERIOR. EVERY VALENCIA IS BUILT WITH HIGH QUALITY MAPLE CABINETS THAT PROVIDE AMPLE STORAGE TO ACCOMMODATE YOUR NEEDS. THE ULTRA SOFT FURNITURE, POLISHED SOLID SURFACE COUNTERTOPS, AND STAINLESS STEEL APPLIANCES ARE JUST A FEW OF THE BEAUTIFULLY DESIGNED FEATURES YOU WILL FIND IN THIS RV.



## INTERIOR DECORS

### CABINETS



LAKWOOD CAPE COD



NEWPORT

ASHEVILLE

HAMPTON



Featured here is the Valencia 38BB in our Hampton decor with beautiful Cape Cod cabinetry.



## AT A GLANCE

EXTERIOR HEIGHT	12'10"
EXTERIOR WIDTH	99 1/4"
EXTERIOR LENGTH	36'10" - 38'2"
INTERIOR HEIGHT	84"
INTERIOR WIDTH	95 1/2"

FUEL CAPACITY	100 GALLONS
DEF CAPACITY	10 GALLONS
FRESH WATER CAPACITY	150 GALLONS
GREY WATER CAPACITY	75 GALLONS
BLACK WATER CAPACITY	75 GALLONS

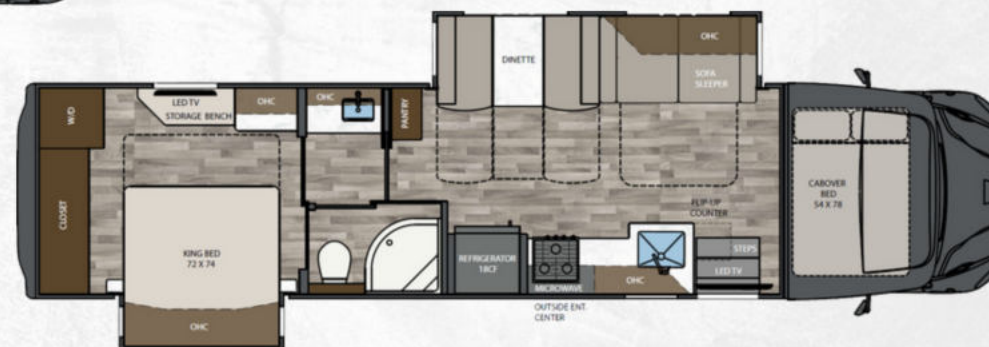
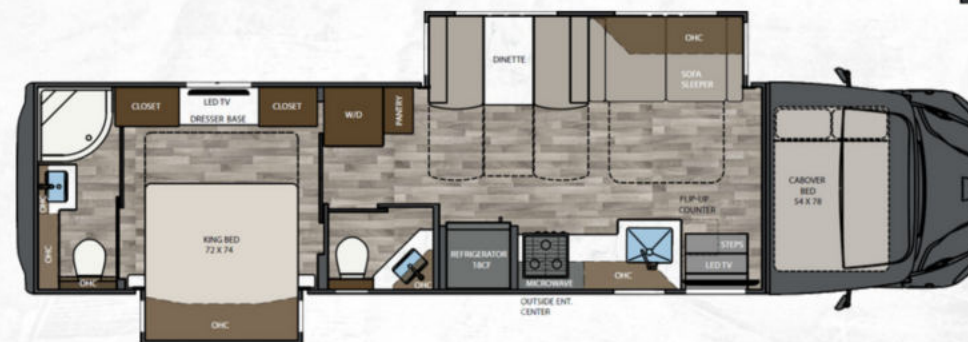
## KEY FEATURES

- 360HP W/ 3000MH ALLISON® TRANSMISSION
- MULTIPLEX SYSTEM WITH COLOR TOUCH PANEL & BLUETOOTH APP CONTROL
- 6 PAINT COLOR OPTIONS
- FOUR-POINT AUTOMATIC HYDRAULIC LEVELING SYSTEM
- ELECTRIC LATERAL ARM AWNING WITH INTEGRATED LED LIGHTS
- SOLID HARDWOOD CABINETS AND SOLID SURFACE COUNTERTOPS



# VALENCIA

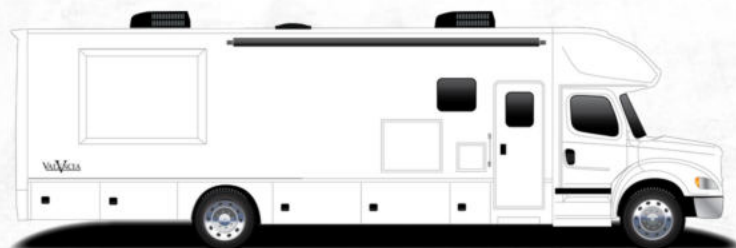
## FLOORPLANS



# PAINT OPTIONS



**POLARIS**



**TUNDRA**



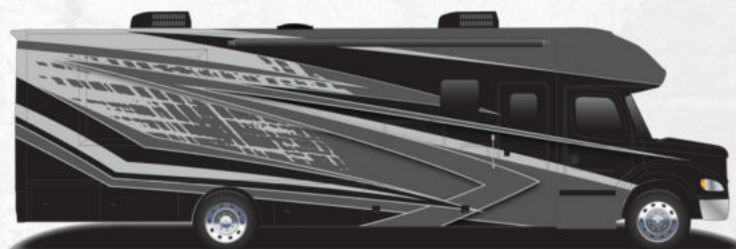
**NITROUS**



**BRICKYARD**



**BURNOUT**



**THROTTLE**

# VALENCIA

# STANDARDS AND OPTIONS

## CAB/CHASSIS

- FREIGHTLINER® S2RV CHASSIS
- CUMMINS® ISB 6.7L 360HP, 800 LB. FT. TORQUE
- 33,000 LBS. GVWR
- ALLISON® 3000MH ELECTRONIC 6-SPEED TRANSMISSION
- 12,000LB. TOWING CAPACITY
- SINGLE 100-GALLON FUEL TANK WITH DRIVER SIDE MOUNTED FILL
- 10 GALLON DEF TANK
- POLISHED ALUMINUM WHEELS WITH CENTER CAPS
- AIRLINER® REAR AIR SUSPENSION
- GARMIN® TOUCH SCREEN, BLUETOOTH, GPS, RV MAPS AND COLOR CAMERA MONITOR
- REAR AND SIDE VIEW CAMERAS
- UPGRADED CAB SOUND SYSTEM
- PREMIUM FREIGHTLINER® SOUND AND THERMAL INSULATION PACKAGE
- LED HEADLIGHT ASSEMBLIES
- POWER WINDOWS AND DOOR LOCKS
- POWER/HEATED REMOTE CONTROL MIRRORS
- AIR RIDE DRIVER AND PASSENGER SEAT PEDESTALS WITH SWIVELS
- SOFT TOUCH DRIVER/PASSENGER SEATS WITH ARMRESTS
- FULL CAB MAT
- AUXILIARY AIR CHUCK AND HOSE
- CUMMINS® VG ENGINE BRAKING WITH DASH SWITCH

## EXTERIOR

- AERODYNAMIC FIBERGLASS FRONT AND REAR CAPS, TRANSITION, AND CAB STEPS
- FOUR-POINT HYDRAULIC LEVELING SYSTEM WITH APP
- EXTERIOR ENTRY DOOR ASSIST HANDLE
- POWERED FOLDING DOUBLE ENTRY STEPS
- (6) COLORWAY PAINT OPTIONS
- GIRARD® GG LATERAL ARM ELECTRIC AWNING WITH LED LIGHTS
- SLIDE TOPPERS
- FRAMELESS DUAL-PANE TINTED WINDOWS WITH SCREENS
- SIDE-SWING ALUMINUM COMPARTMENT DOORS WITH SINGLE HANDLE PADDLE LATCHES AND DOUBLE CATCH
- STEEL STORAGE COMPARTMENTS WITH CARPETED LINING
- DIAMOND SHIELD® NANO-FUSION™ PAINT PROTECTION (FRONT MASK)
- UNDERCOATING

## CONSTRUCTION

- 2" VACUUM BOND LAMINATED SIDEWALLS WITH WELDED ALUMINUM FRAMING
- WELDED ALUMINUM ROOF TRUSS SYSTEM WITH FRAMED CUTOUTS
- ONE-PIECE CROWNED FIBERGLASS ROOF SURFACE
- "SUPER SANDWICH" FLOOR CONSTRUCTION WITH COMPOSITE UNDERBELLY INCLUDES:
  - 2" WELDED STEEL FLOOR JOIST SYSTEM MOUNTED TO 3" STEEL LONGITUDINAL FLOOR BEAMS
  - 3/4" FIR PLYWOOD DECK OVER 2 X 4 WOOD-FRAMED RESIDENTIAL FLOOR WITH THERMAL AND SOUND DEADENING INSULATION

## INTERIOR

- (3) INTERIOR DECOR OPTIONS
- DÉCOR COORDINATING FABRIC VALANCES
- DOUBLE ROLLER DAY/NIGHT SHADES (MANUAL)
- DECORATIVE WALLBOARD WITH COORDINATING ACCENT IN SLIDEOUTS
- PREMIUM VINYL FLOORING THROUGHOUT
- MAPLE HARDWOOD CABINETRY
- 2-WOOD STAIN COLOR OPTIONS
- DRAWERS ON SOFT CLOSING SLIDES
- FRAMED DOORS ON HIDDEN HINGES
- PANTRY
- HARDWOOD SLIDE FASCIA
- SATIN NICKEL DOOR HARDWARE
- SATIN NICKEL KITCHEN FAUCET
- SOLID SURFACE COUNTERTOPS THROUGHOUT
- RECTANGULAR STAINLESS STEEL SINGLE BOWL UNDERMOUNT KITCHEN SINK WITH COVER
- GROUTED TILE BACKSPLASH
- FLIP-UP COUNTERTOP EXTENSION
- LED LIGHTING
- MEMORY FOAM MATTRESS
- ULTRA SOFT TOUCH VINYL FURNITURE UPHOLSTERY
- CONVERTIBLE BOOTH DINETTE WITH STORAGE
- SOFA SLEEPER, TRI-FOLD
- CABOVER BUNK WITH WINDOW AND POWER SHADE

## APPLIANCES

- 18.0 CU. FT. RESIDENTIAL STAINLESS STEEL REFRIGERATOR WITH ICEMAKER
- RECESSED SEALED 3-BURNER STAINLESS STEEL LP COOKTOP
- 1.7 CU. FT. STAINLESS STEEL CONVECTION MICROWAVE OVEN
- TRUMA® AQUAGO COMFORT PLUS TANKLESS WATER HEATER
- (2) 15,000 BTU ROOF A/C WITH HEAT PUMPS AND PLUMBED CONDENSATION LINES
- DUCTED AIR CONDITIONING
- 35,000 BTU LP DUCTED GAS FURNACE
- MAXXAIR® POWER VENTS
- PRE-WIRED AND PLUMBED FOR OPTIONAL WASHER/DRYER
- CARBON MONOXIDE, LP AND SMOKE DETECTORS, AND FIRE EXTINGUISHER

## ENTERTAINMENT SYSTEM

- 39" SMART LED TV IN LIVING AREA
- SOUNDBAR HOME THEATER WITH BLUETOOTH STREAMING AND WIRELESS SUBWOOFER IN LIVING AREA
- 32" SMART LED TV IN BEDROOM
- EXTERIOR ENTERTAINMENT CENTER
  - 32" SMART LED TV ON SWIVEL
  - SOUNDBAR WITH BLUETOOTH STREAMING
  - USB CHARGING
- WINEGARD® CONNECT 2.0 ROOFTOP OTA ANTENNA WITH WIFI AND 4G READY (SIM CARD REQ.)
- WINEGARD® IN-MOTION SATELLITE SYSTEM
- PREWIRE FOR WINEGARD® TRAV'LER STATIONARY HD SATELLITE SYSTEM

## BATH

- MAPLE HARDWOOD VANITY, MEDICINE, AND LINEN STORAGE CABINETS
- LED VANITY LIGHT
- DELUXE SATIN NICKEL BATH FAUCET AND ADJUSTABLE SHOWER HEAD
- SATIN NICKEL TOWEL BAR, TOWEL RING, AND TP HOLDER
- PORCELAIN MACERATOR TOILET WITH PUSH BUTTON FLUSH
- SOLID SURFACE COUNTERTOP WITH INTEGRATED SINK
- WAVY PATTERNED FIBERGLASS SHOWER WITH GLASS DOOR
- SKYLIGHT OVER SHOWER

## ELECTRICAL SYSTEMS

- 8KW ONAN QUIET DIESEL GENERATOR
- AUTOMATIC GENERATOR START SYSTEM
- 50-AMP ELECTRICAL PANEL
- 3,000W TRUE SINE WAVE INVERTER
- TRANSFER SWITCH WITH SURGE PROTECTION
- 330AH AGM HOUSE BATTERY
- SOLAR CHARGING SYSTEM PRE-WIRE
- MULTIPLEX CONTROL SYSTEM WITH BLUETOOTH APP CONTROL
- USB/USB-C CHARGING IN LIVING AREA, BEDROOM, KITCHEN AND BUNK AREAS
- 50-AMP POWER RETRACTABLE SHORE CORD REEL
- 12V HOLDING TANK HEATERS, GREY AND BLACK TANKS

## PLUMBING

- 150 GALLON FRESH WATER TANK
- 75 GALLON GREY TANK
- 75 GALLON BLACK TANK
- 20 GALLON LP TANK
- SEE-LEVEL® TANK MONITORING SYSTEM
- FULL MAINTENANCE WET BAY
  - BLACK TANK FLUSH SYSTEM
  - CITY WATER HOOKUP WITH POWERED RETRACTABLE HOSE REEL
  - OUTSIDE FAUCET WITH SPRAYER
- ON DEMAND WATER PUMP
- WHOLE HOUSE WATER FILTRATION SYSTEM
- LP QUICK DISCONNECT

## POPULAR OPTIONS

- RECLINING THEATRE SEAT ILO STANDARD SOFA
- (2) 19" MONITORS WITH DVD IN BUNK SLIDE (38BB ONLY)
- 24" SMART LED TV AT CABOVER BUNK
- WINEGARD® IN-MOTION SATELLITE DISH
- WINEGARD® HD SATELLITE TRAVELR PRO
- 600W SOLAR PANEL SYSTEM (3 @ 200W)
- (3) 100AH LITHIUM BATTERIES ILO AGM BATTERIES
- AMERICAN RACING WHEELS® UPGRADE (BLACK)
- CALIBER 9® GRILLE PACKAGE (AVAIL. IN CHROME OR BLACK)
- FULL-WIDTH ROCK GUARD MUDFLAP
- WASHER AND DRYER STACK